

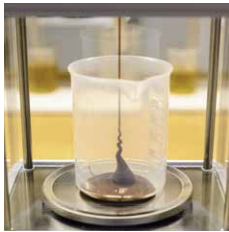


SPECTRUM

SPECTRUM is a revolutionary new, fully dispersible liquid hop product, that delivers full true to type dry-hop characteristics.

The final product is 100% hop material with no solvents or artificial additions. Imagine the finest hop pellets in liquid form and you will understand the impact and efficiency gained when using SPECTRUM. Here are some tips on how to use it.

***NOTE:** We find best flavor outcomes are achieved with Spectrum when dosing into (secondary) fermentation.*



1. ROOM TEMPERATURE

Store cold but allow the product to warm up to room temperature.

2. MEASURE QUANTITY

Weigh the required amount into a jug or beaker.

***NOTE:** The replacement rate for pellets with SPECTRUM is typically 1:5 to 1:8 w/w, depending on your application. If you are aiming to match an existing recipe, we recommend starting with partial substitution or benchtop trials to establish dose rates. When dosing into bright beer, dose Spectrum on oil content. A starting dose rate of 0.5 to 1 ml oil per hl is recommended.*



3. ADD LIQUID

Add cold or lukewarm deaerated water or wort for dispersion.

***NOTE:** The product should be dispersed in 5 - 10 times the amount of liquid. In some dynamic dosing systems, pre-dispersion may not be necessary.*



4. STIR

Stir thoroughly to ensure full dispersion of the product. If necessary, rinse out the SPECTRUM packaging and add this to your pre-dispersion.



5. FLUSH WITH CO₂

Flush your tank or dosing system with CO₂ to reduce air ingress.

6. ADD TO TANK OR DOSING VESSEL

Add the pre-dispersion directly to the beer tank or dosing vessel and proceed as you would with pellets.

PLEASE CONTACT YOUR USUAL BARTHHAAS CONTACT OR OUR BREWING SOLUTIONS TEAM WITH ANY QUESTIONS:

brewingsolutions@barthhaas.de